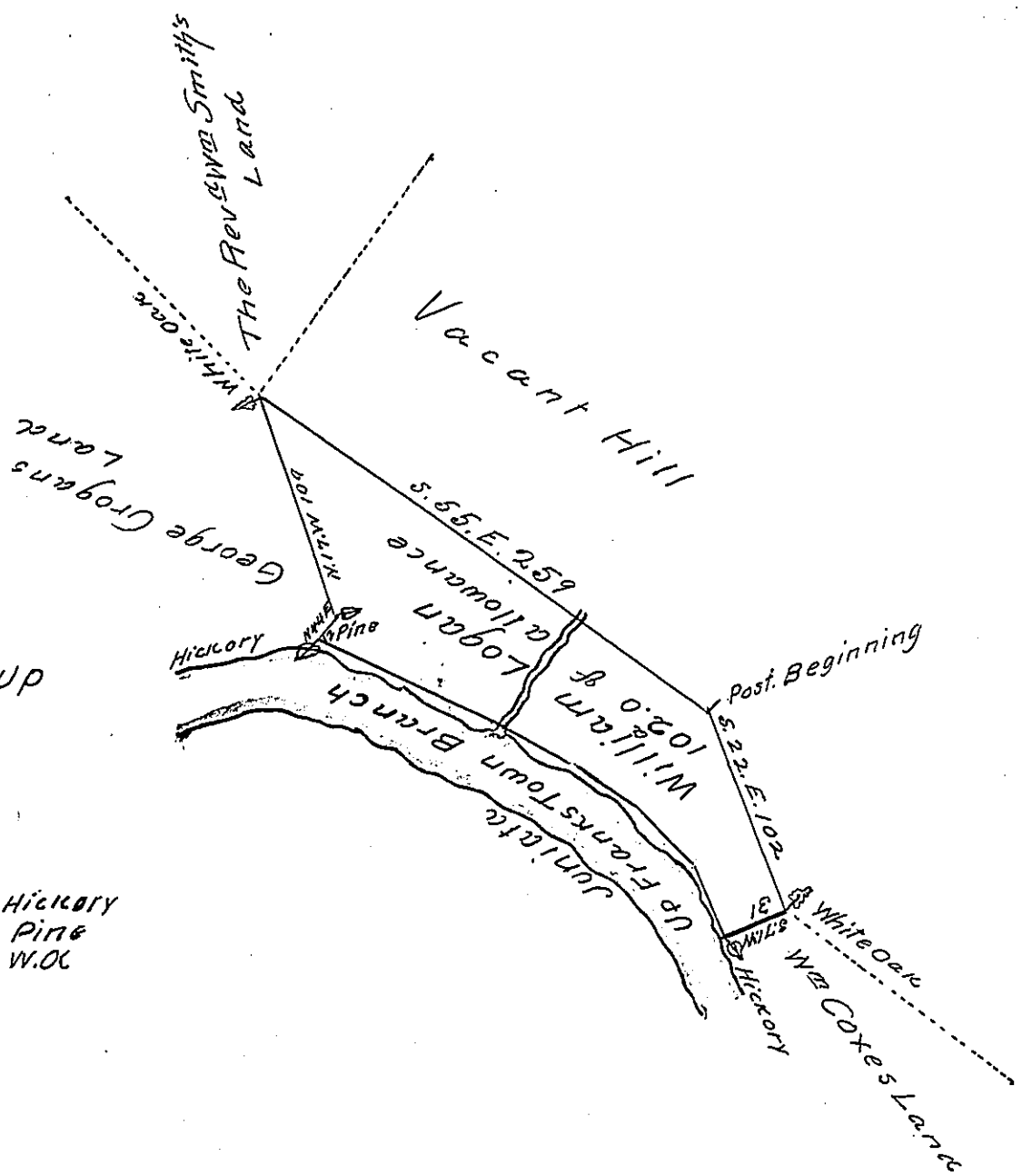


The Courses up
Juniata

- N 26 W 35
- N 43 W 38
- N 57 W 40
- N 62 W 45
- N 65 W 91 Hickory
- N 44 E 12 Pine
- N 17 W 109 W.O.C
- 370



The Draught of a Tract of Land called "New Edinburgh" situate on the North East side of Frankstown Branch of Juniata River Joining & below the Rev^d Doct^r W^m Smith's Land on the Standing Stone— Containing One hundred & two acres with the usual allowance of Six p Cent for Roads. Surveyed the 26th Day of July Anno Dom: 1775 In Pursuance of an Order of Survey to William Logan Bearing Date the 23rd Day of September Anno Domini 1767 and Numbered 4403

W^m Maclay

To John Lukens Esq^r S^c
of Pennsylvania

IN TESTIMONY that the above is a copy of the original remaining on file in the Department of Internal Affairs of Pennsylvania, made conformably to an Act of Assembly approved the 16th day of February, 1833, I have hereunto set my Hand and caused the Seal of said Department to be affixed at Harrisburg, this seventeenth day of March 1905

Loac B. Benson
Secretary of Internal Affairs.